

Design and Build Teachers Pack - Art and Design

This pack aims to use the site of Crystal Palace Park - which brings together two distinct landscape architecture schemes in the build environment - as a way to explore art and design for KS1 - 2. The park links the themes of use, setting, materials and shape as a foundation for understanding architectural practice, history and other forms of design.

Background:

Crystal Palace Park was opened in 1854 as the new setting for the Crystal Palace, a grand glass structure which had hosted The Great Exhibition in South Kensington three years earlier. Created by Joseph Paxton its design featured broad Italian terraces, rotundas, mazes, and an impressive number of fountains and cascades. The design took full advantage of the 90ft incline from the top of what had once been Penge Place to the base of the park with a boating lake and display of monsters and geological illustrations.

By the 1950s, the park had fallen into disrepair, with the palace having burnt down in 1936. Sir Gerald Barry - who had been Director of the Festival of Britain - generated two schemes to renovate the park; the winning proposal was a National Sports Centre. Built by the London County Council (LCC) from mostly concrete in the early 1960s, the centre displays a clear Brutalist style including repetitive use of geometric forms, minimal decoration and a layered, elongated perspective.

Design and Build Teachers Pack

Art and Design Activities

Key Stage 1 Colour and shape:

Spot the range of colours in the park (HINT: greys of Brutalism, Oxidised red of the concert platform, the flowerbeds...)

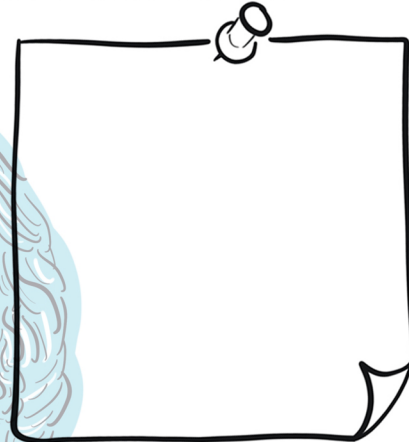
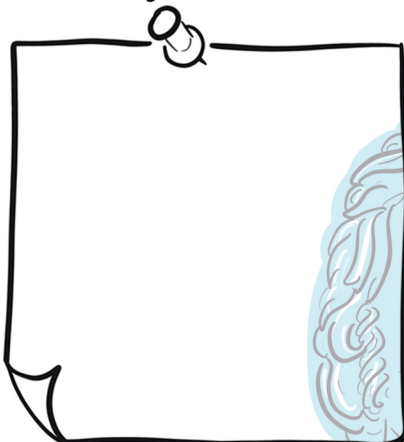


How do they make you feel?

What else is that colour?



Why did the architect choose that colour?



**AN ARCHITECT IS SOMEONE WHO DESIGNS HOUSES, PARKS, SCHOOLS -
EVEN CASTLES. WHICH OF THESE DO ALL BUILDINGS HAVE:**

WINDOWS, DOORS, ROOFS, DINOSAURS, GARDENS, SWIMMING POOLS, BRICKS?



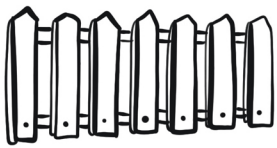
Design and Build Teachers Pack

Key Stage 1 Colour and shape:

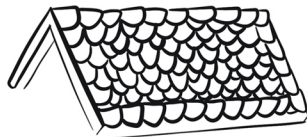
Group work:

Why not make a proposal for repainting one of the buildings. However, rather than just choosing their favourite colour, get your pupils to carefully think why they would choose the new colour. Does it make them feel calm, would it fit in with the environment, would it be attractive to a group of park users?

Here are a range of different shape and house pieces:



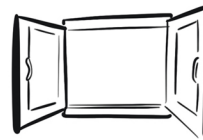
gate



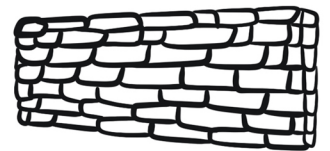
roof



steps

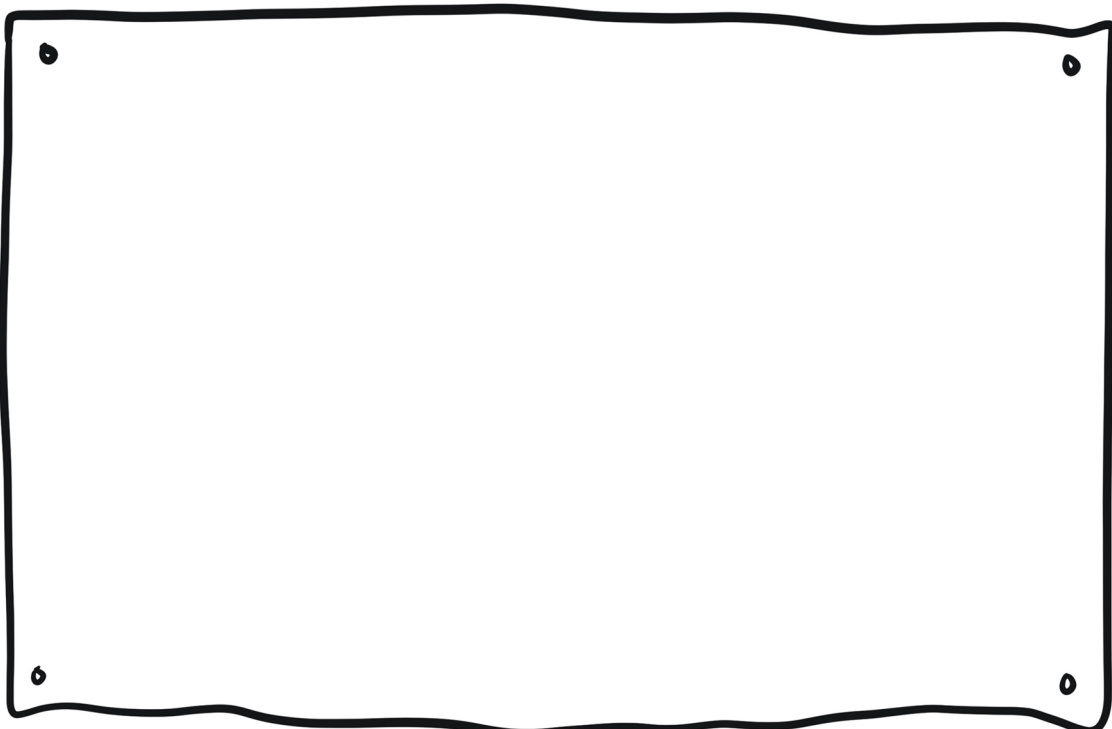


window



wall

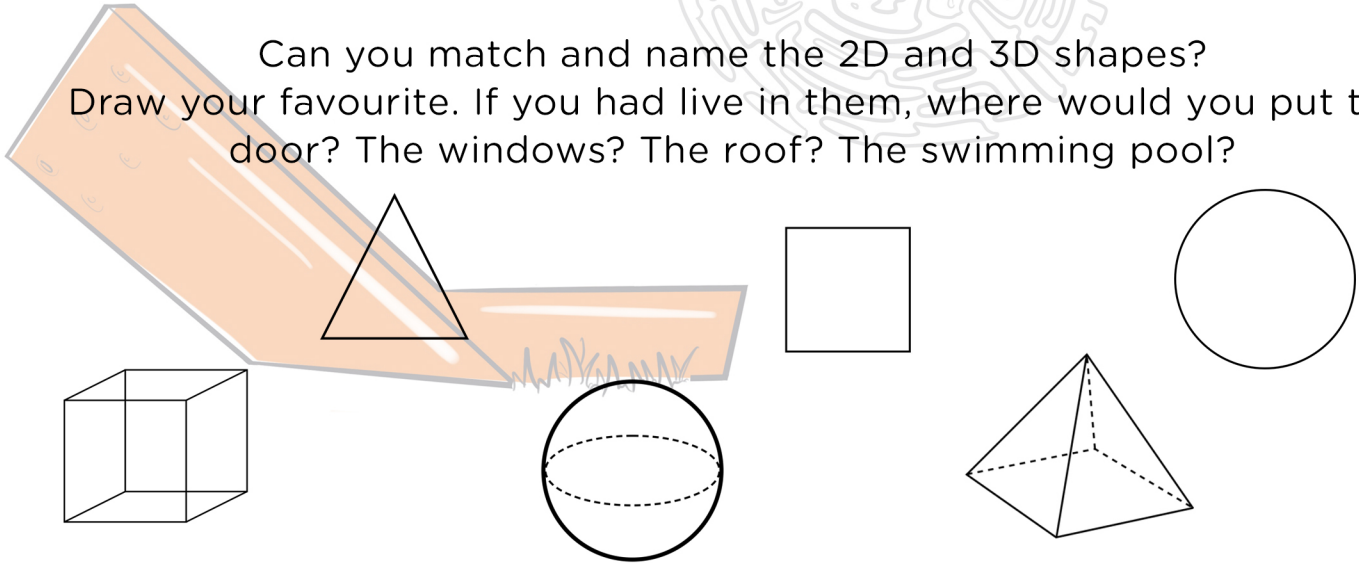
How would you arrange them to make a castle, a house, or a football stadium? Draw your ideas below:



Design and Build Teachers Pack

Key Stage 1 Colour and shape:

Can you match and name the 2D and 3D shapes?
Draw your favourite. If you had live in them, where would you put the door? The windows? The roof? The swimming pool?



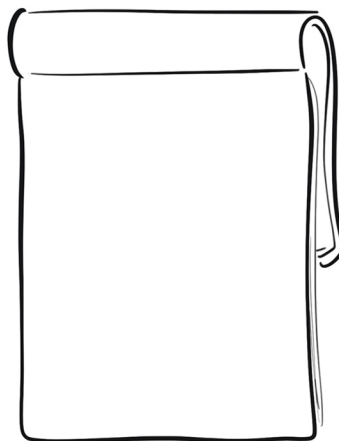
Now, spot and name the range of shapes in Crystal Palace park.
Can you see a triangle, square or a cylinder in the buildings?
(Try the concert platform, sports centre or stadium)



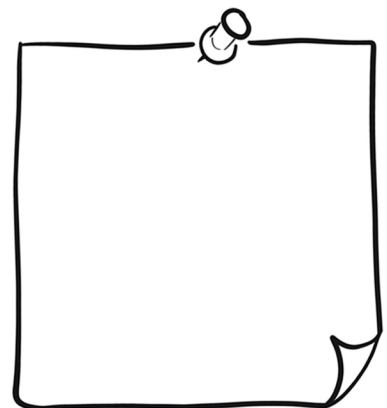
List all the materials
in the park ...



What colour are they?



What do they feel like
to touch?



Design and Build Teachers Pack

Key Stage 2 Pattern and Texture

Collect 5 textures with either photography, crayon rubbing or from nature sources in the park.

Back in the classroom use your collected textures to make a collage or 3D sculpture. If you make the sculpture, could you **transform** it into a building? (HINT: try adding a door and window and think about who might use such a building...)

ARCHITECTURE IS BUILT EITHER AS AN ARRANGEMENT OF SOLID FORMS - SUCH AS BRICKS, STONES - OR USING A SHELL AND SKIN TECHNIQUE (SIMILAR TO A TENT). EVEN SOME TOWER BLOCKS ARE BUILT LIKE THIS.

Go on a hunt around the park and find, then something:

*Uneven. Soft. Metallic. Natural. Bright. Hard. Smooth.
Jagged. Heavy. Light.*

.....

With a regular pattern. With an irregular pattern. With no pattern

.....

Can you write down why you chose what you did?

From the whole class:

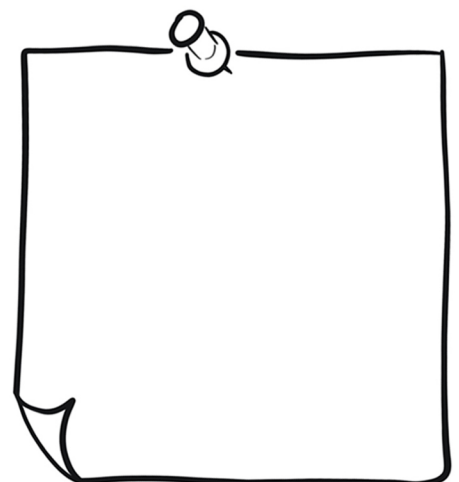
Which was the longest object? _____

Which was the roundest? _____

Which is smoothest? _____

Which was the funniest? _____

Which was your favourite texture? _____



Design and Build Teachers Pack

Key Stage 2 Pattern and Texture

ARCHITECTS THINK ABOUT SURFACES AND TEXTURES IN DESIGNING THEIR BUILDINGS. THEY WANT TO CREATE AN IMPRESSION.

Ask a friend:

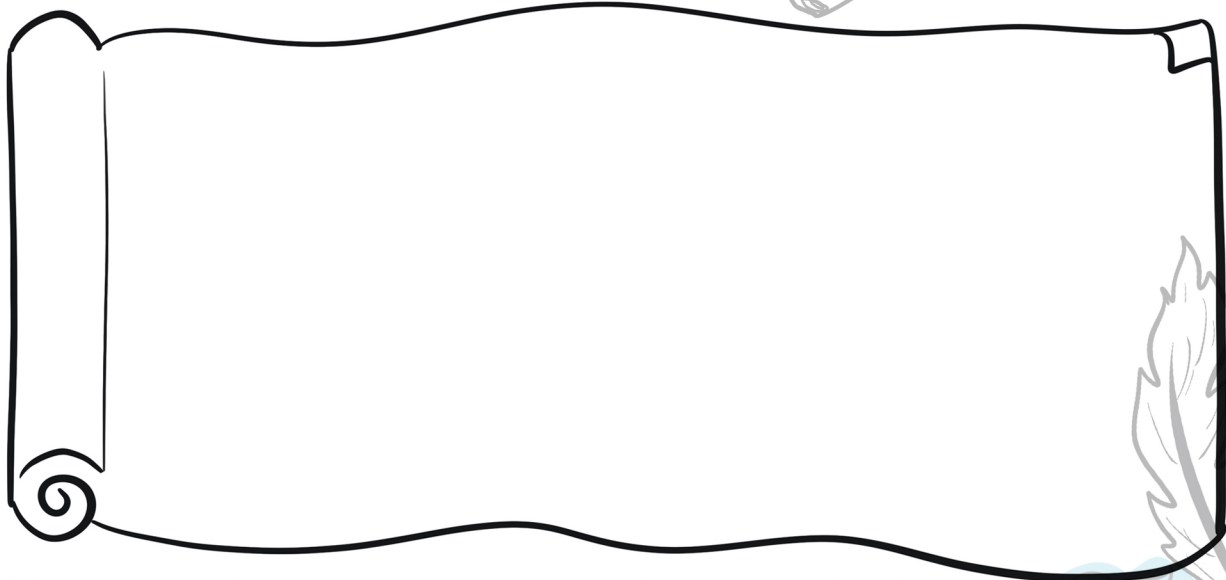
- What would the school look like with a surface of feathers?
- What would a castle look like made of plastic?
- Why might a building have a pattern?

Design a den

Make your dream home, you can choose from: *mirror, feather, brick, slate, neon, cardboard, string, rope, plastic, wood.*

Decide:

- Where is the entrance and the roof?
- Do you need windows?
- What is the surface made from?



And finally design a new structure for Crystal Palace Park

Select just one of these materials: *glass, leaves, stone, plastic.*

What would you make for Crystal Palace Park? HINT - make a list of on the back of this page of the 'qualities' of each and think of the best option. i.e

Glass

Pro

See through

Waterproof

Con

Gets warm quickly

Fragile



Design and Build Teachers Pack

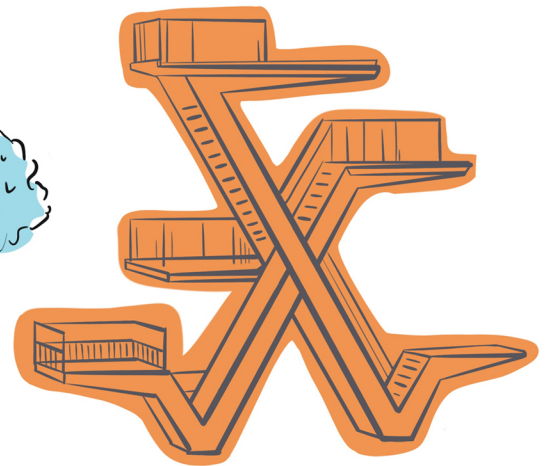
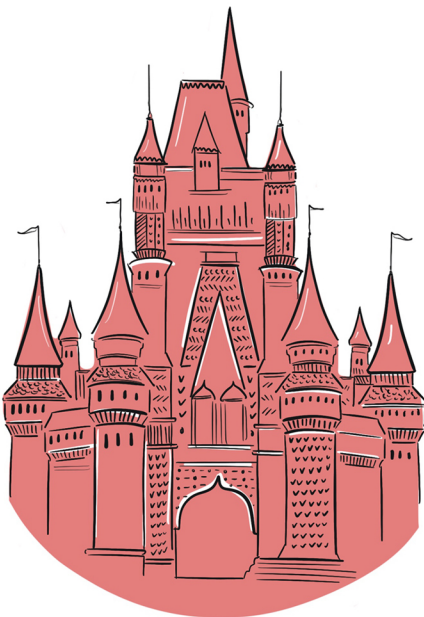
Architecture For All

Architects work with 4 key things:

SETTING
MATERIALS
SHAPE
USE

Ask these questions of this castle, this house and this structure in Crystal Palace Park ...

Who is it for? **What** is it made from? **What** shape/form is it?
Where would you find it?



***Architecture For All's aim is to open up architecture,
its history and the design process.***

Design and Build was a creative architectural history project that took place in Crystal Palace Park in June 2018. It was supported by the Heritage Lottery Fund and London Borough of Bromley.