

CRYSTAL PALACE MAP

www.architectureforall.org.uk

Crystal Palace Park was opened by Josphe Paxton in 1854 as a new setting for his famed attraction which was bought piece by piece from its South Kensington home. Fountains, Italian terraces, mazes and sphinxes created the ambience of a Victorian pleasure garden which sadly fell into disrepair following a fire which destroyed the palace in 1936. In the early 60s the park the lower half of the park was subject to a renovation with the coming of the National Sports Centre, designed by the London County Council in a bold Brutalist design.

Find your way around Crystal Palace Park!

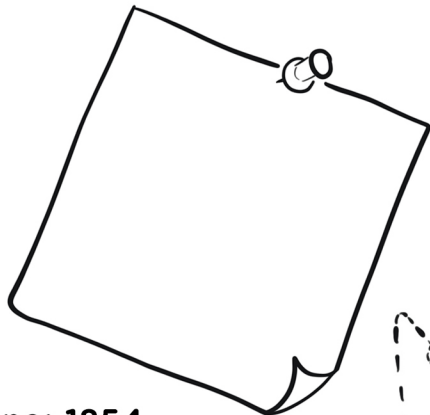
Sphinx: 1854

Take in the view. What can you see from the sphinx's eye? Tell someone next to you, or write it down below:



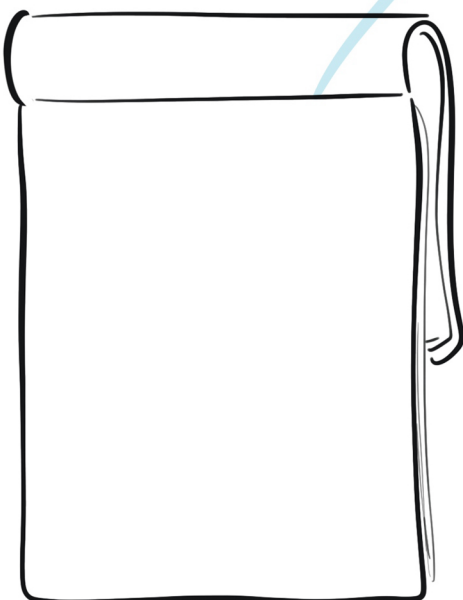
Paxton Head

This bust of Josphe Paxton was moved from the top to the middle of the park - but why? Is this a good setting? List here what else you could do with such an enormous head?



Dino: 1854

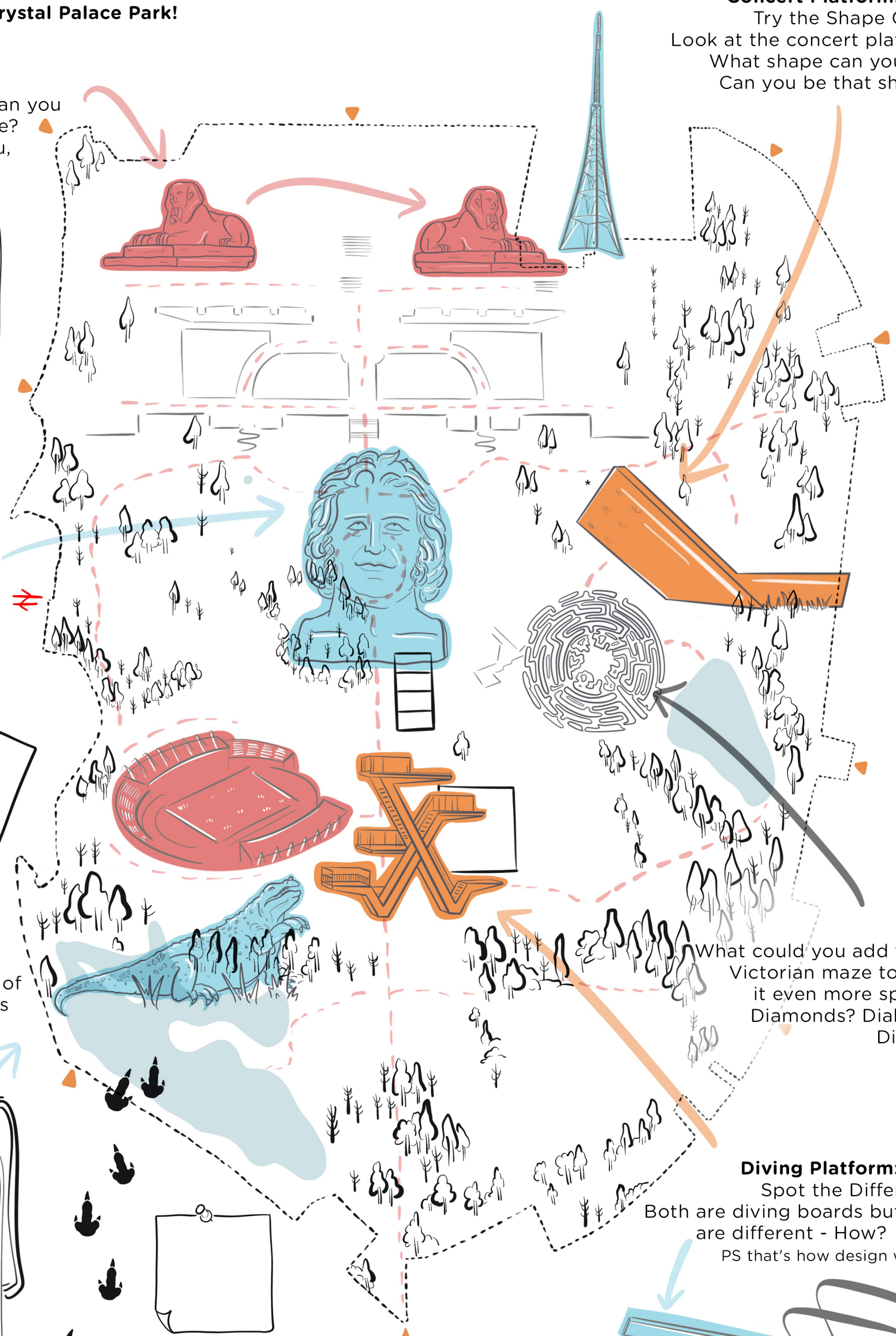
Draw a Dino! Josphe Paxton commissioned a display of dinosaurs and monstrous beasts here at Crystal Palace - can you add one more?



Concert Platform: 1996

Try the Shape Game! Look at the concert platform. What shape can you see? Can you be that shape?*

* The concert platform bends at a 90 degree angle. Can you spot any other triangular shapes about the park? How about squares? Circles? Architects often use triangular shapes as trusses to support buildings and structures, or sometimes just because they look pretty.

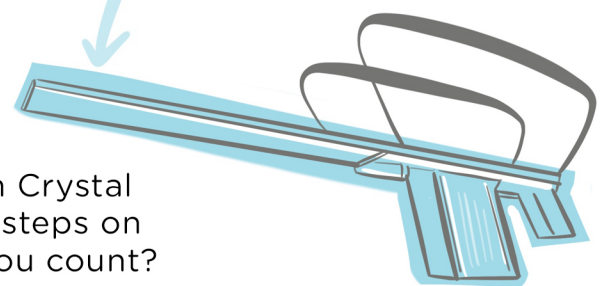


Maze

What could you add to this Victorian maze to make it even more special? Diamonds? Diabolos? Dinos...?

Diving Platform: 1964

Spot the Difference! Both are diving boards but both are different - How? Why? PS that's how design works...



A tale of 2 halves

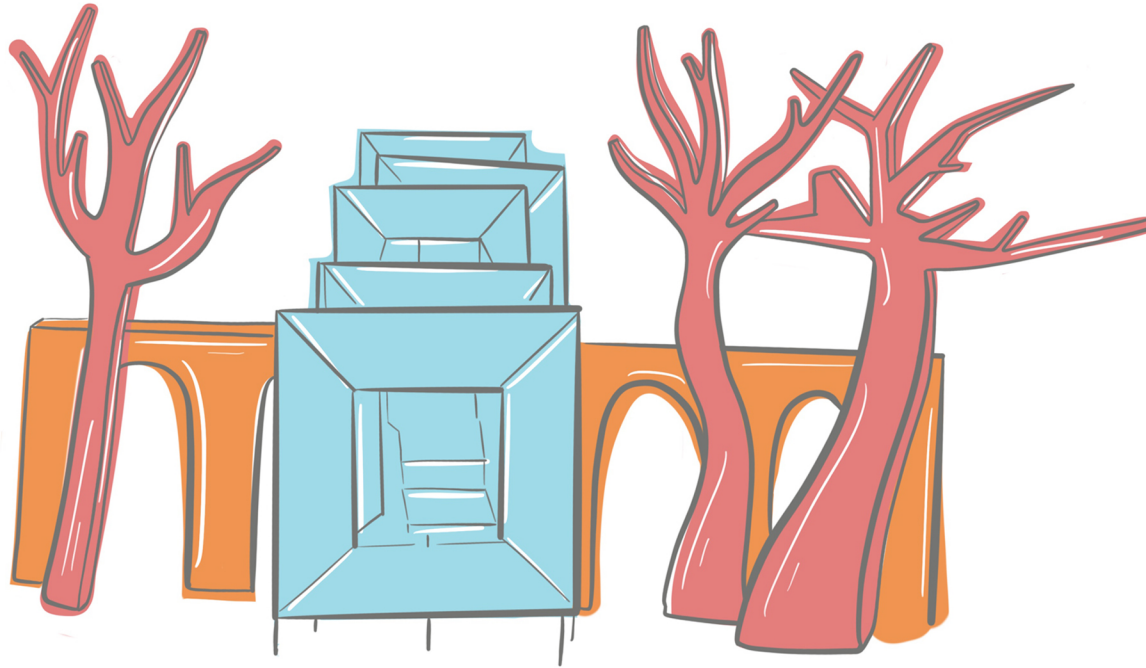
There are two main design schemes at play within Crystal Palace Park, but they are connected by numerous steps on site. We counted 26 sets of steps. How many can you count?

DESIGN AND BUILD

www.architectureforall.org.uk

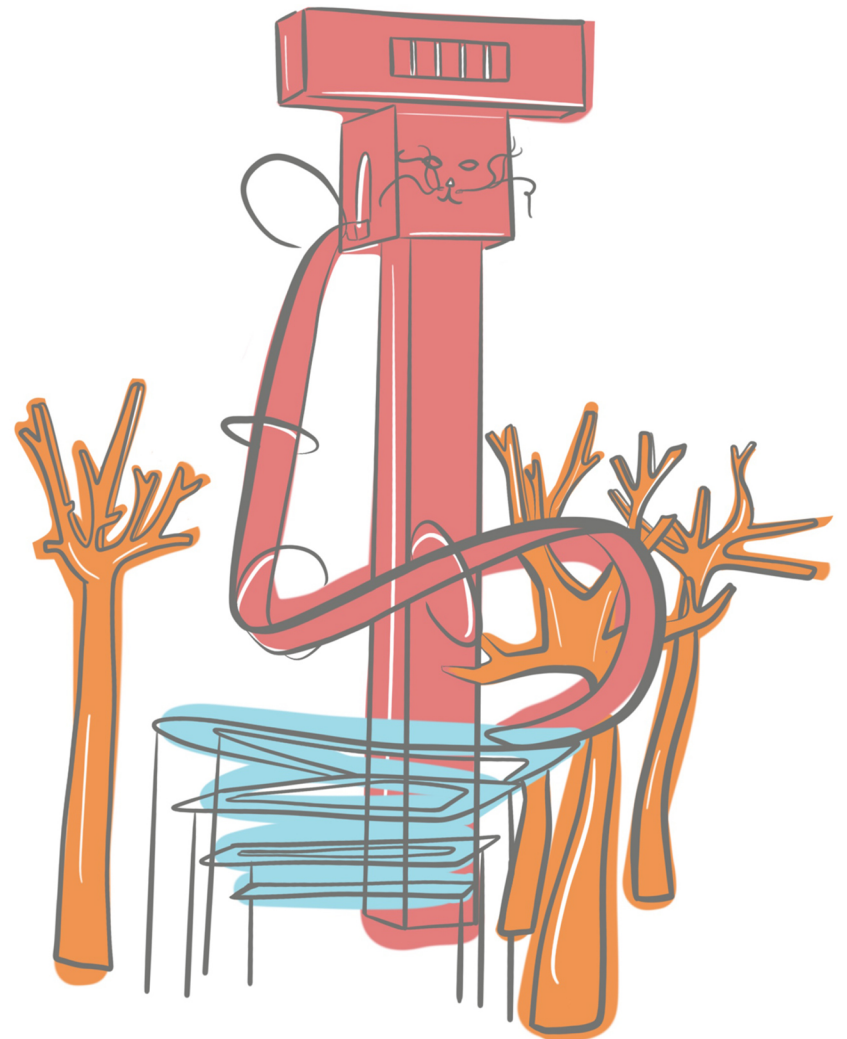
architecture
for all

In summer 2018, Architecture For All was sponsored by the Heritage Lottery Fun and London Borough of Bromley to explore the history of Crystal Palace Park with local residents. Together we generated ideas for a potential new facility for the park. The ideas were swapped around and each group then worked with an architect to realise a model of the suggestions.



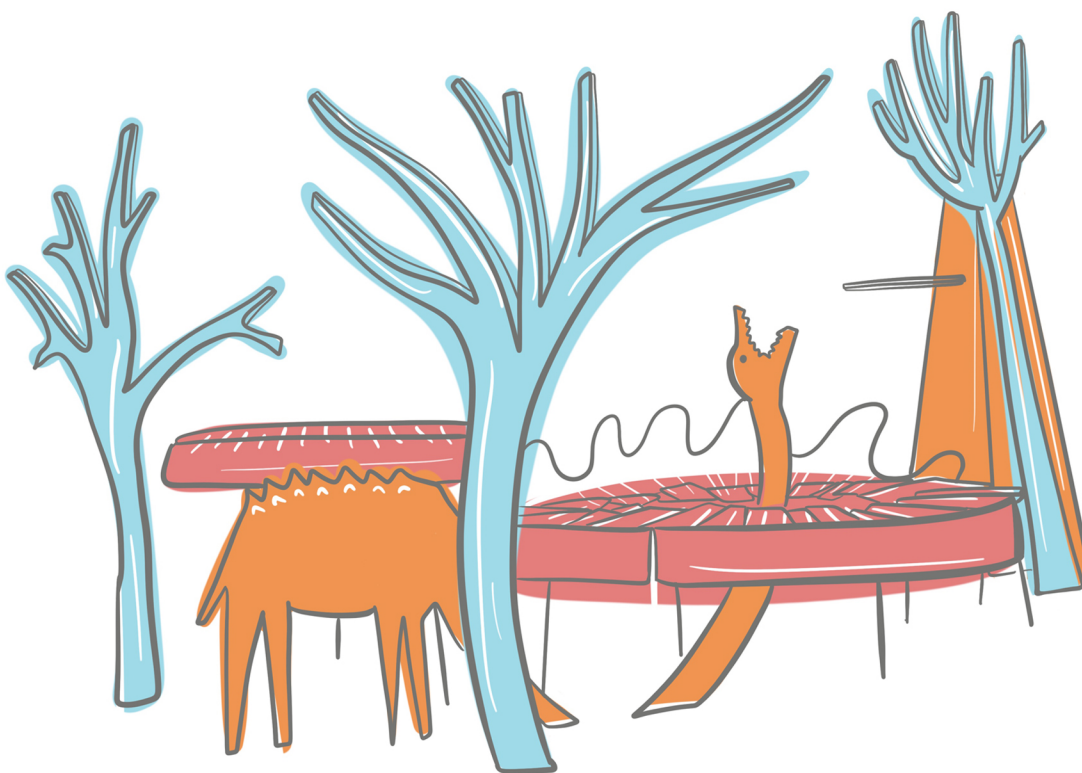
Churchfields:

'A water feature which utilises renewable energy'
[suggested by Silverfit Crystal Palace]



Anerly Town Youth Group

'A slide !'
[suggested by YR5 Cherry Class
Churchfields Primary School]



Silverfit Crystal Palace

'A lido for the park'
[suggested by Anerley Town Hall Youth Group]

Architecture For All aims to cultivate an interest in architecture, urban planning and their history and create opportunities for architects to work in the wider community.
Design and Build's project film can be seen at:

[www.architectureforall.org.uk/ film.](http://www.architectureforall.org.uk/film)